

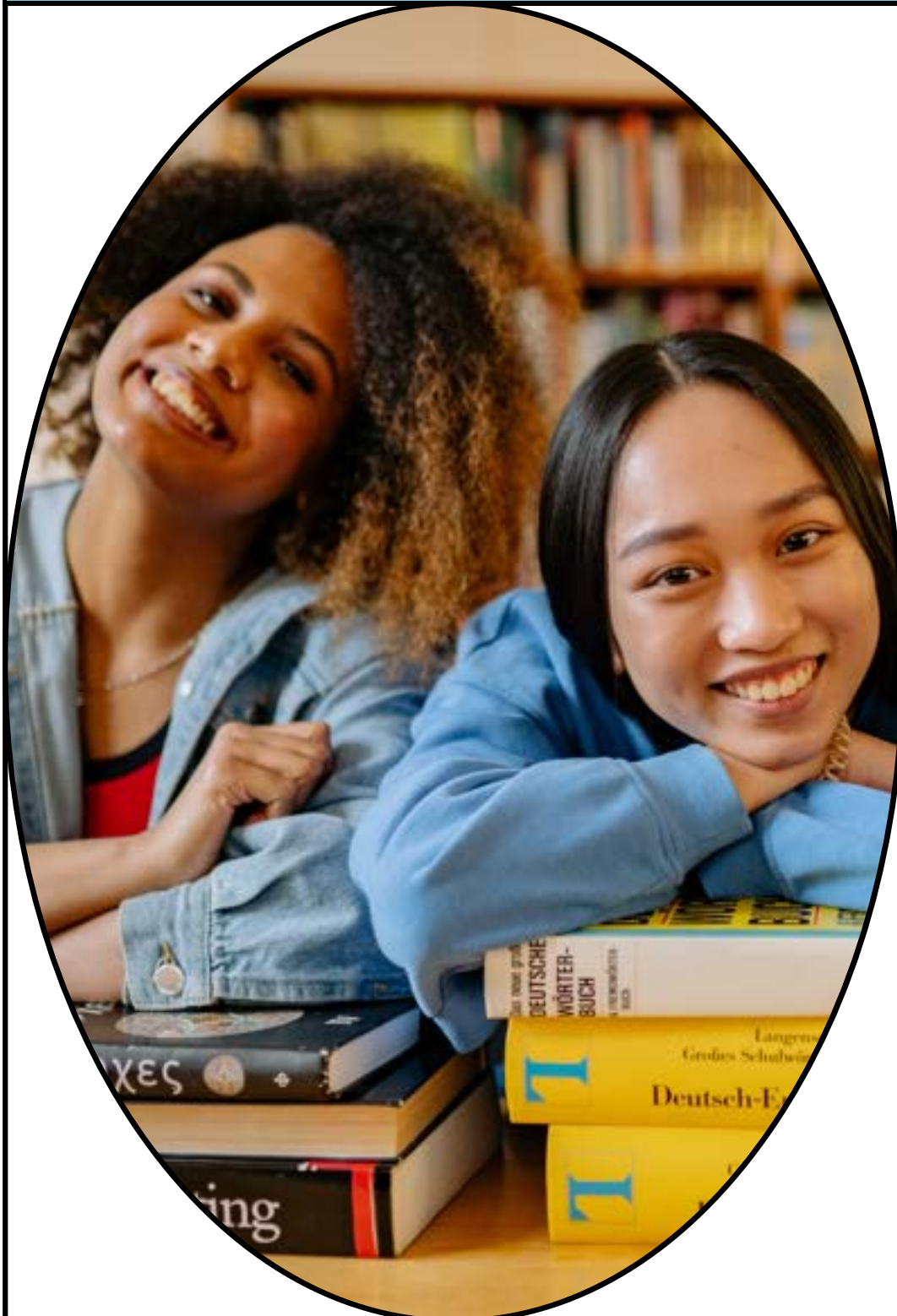
UNIVERSITY OF RENNES



Université
de Rennes



European
Digital
UniverCity



INTERNATIONAL STUDENT GUIDE 2023-2024



SUMMARY



01 WELCOME

09 ADMINISTRATIVE STEPS

17 STUDENT LIFE

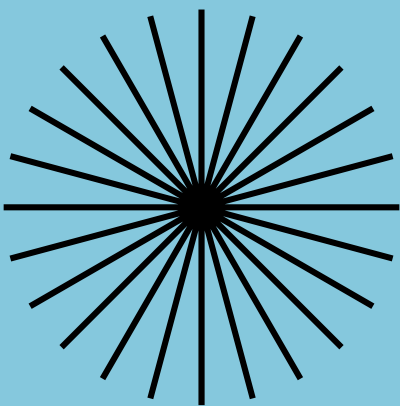
24 CONTACT

WELCOME TO RENNES



Rennes, capital city of western France, is a dynamic and vibrant human-scale city, only 1h30 from Paris by high-speed train.

Rennes is the **8th academic French city** with 70,000 students (8,000 international).



WELCOME TO THE UNIVERSITY OF RENNES

The University of Rennes, which finds its roots in the XVth century, is among the 12 main universities in France. Located in the capital of Bretagne, and only 1h30 from Paris by train, you'll be able to enjoy a dynamic student life and discover the French way of life in a human-scale city.



A research-intensive university

Willing to fully take part in the major challenges of innovation and knowledges of our century. Its expertise in research and its links with the economic sector have made Université de Rennes 1 renowned on an international scale. Our university counts **21 IRP (International Research Project, former LIAs)** and **4 IRN (International Research Network)**.

With a strong international orientation

Thanks to its close and long-lasting relations with numerous universities worldwide and its involvement in international networks, the Université de Rennes 1 contributes to internationalising higher education, as well as structuring the European Higher education and research area. Therefore, our university is a member of **EDUC (European Digital UniverCity)**, one of the first European Alliance since 2019.

Université de Rennes 1 offers **degrees taught entirely in English** in various disciplines and counts about 10% international students among its 30,000 students enrolled each year. In 2019, the Université de Rennes 1 was awarded the **"Bienvenue en France"** Label of Excellence for the quality of its services provided to international students.



University of Rennes
2 rue du Thabor
35065 Rennes CEDEX

▶ www.univ-rennes.fr/en

Administrative services

- ▶ [International Relations Offices](#)
- ▶ The Direction of International Relations and Affairs
- ▶ [The registrar's offices](#)

CMI welcome desk

1 place Paul Ricoeur
35044 Rennes CEDEX

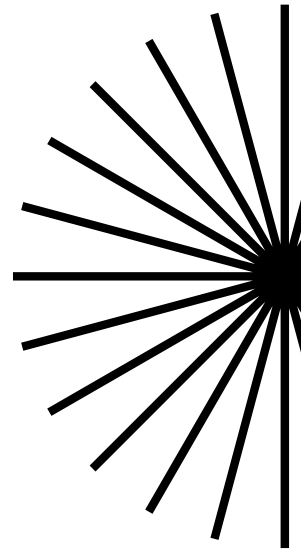
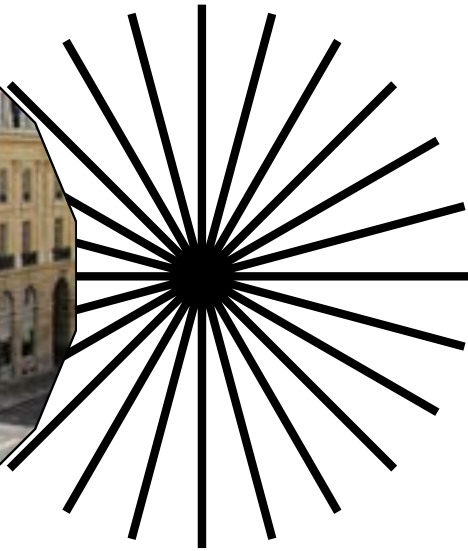
▶ <https://cmi.univ-rennes.fr/en>

Connecting to wifi

"Eduroam" or "Univ-rennes1" (if you have a [sésame account](#))



GETTING AROUND RENNES



The Korrigo card

The Korrigo card is a multi-service transport card. It allows you to use all public transport (subways, buses, bikes) but also gives access to a multitude of services, such as access to the city's swimming pools or municipal libraries.



A multi-service card

Since the start of the 2021 academic year, the Korrigo card is also used as the **university service card**: for printing and copying, as well as for registering to the university Library (BU) and for sport (SIUAPS).

There are 4 branches in Rennes where it is possible to obtain and load the Korrigo card. Also think about the **Star app** to get around Rennes more easily (or **Handimap** if you are a student with a disability).

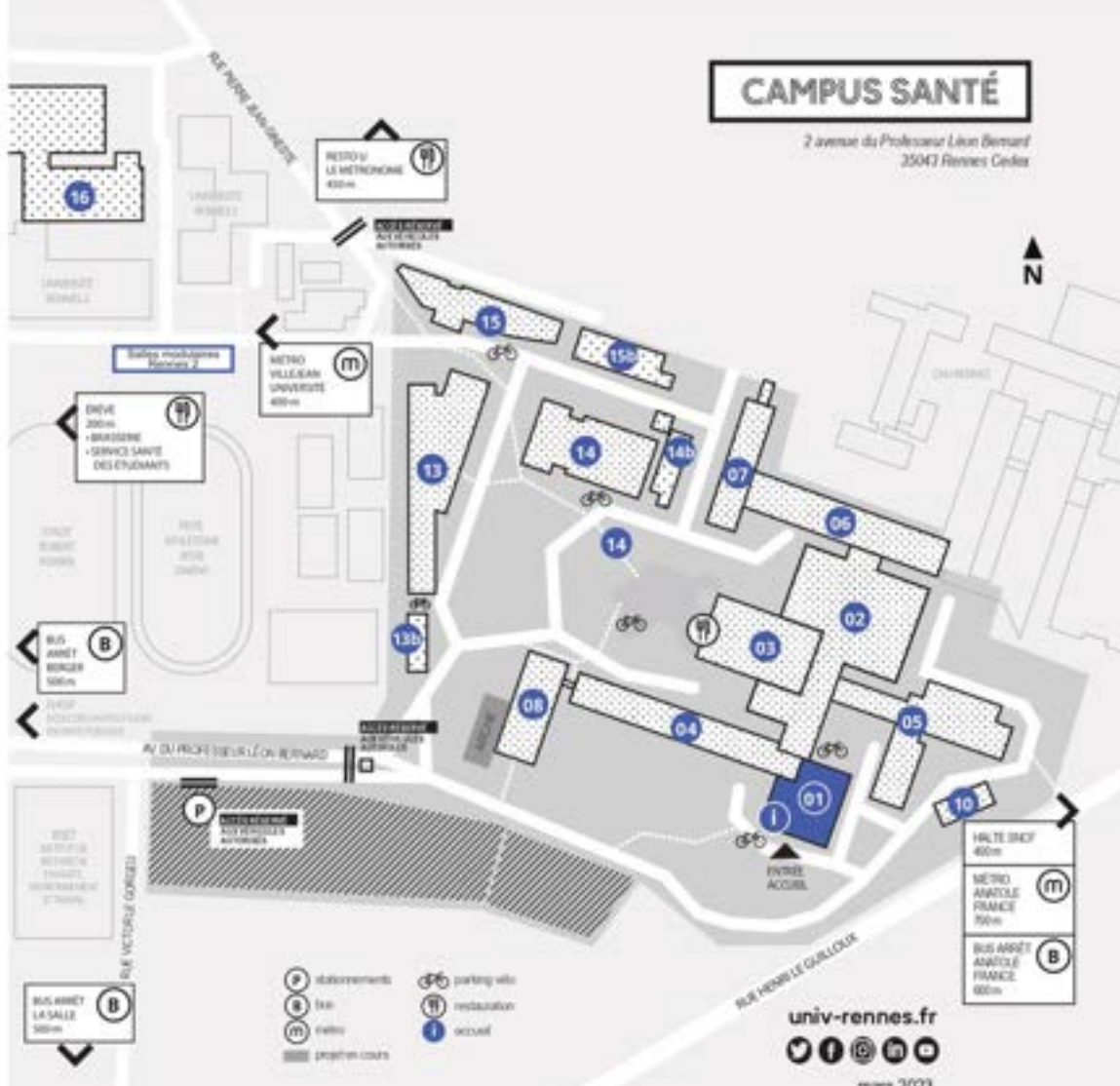


CAMPUSES MAPS

- 01 ACCUEIL - DÉCANAT ADMINISTRATION
MÉDECINE - PHARMACIE
Salle des thèses
Salle des conseils
- 02 Grand hall des amphithéâtres - de A à G
MICMAC - Microenvironnement, Cell différentiation, Immunology And Cancer
- 03 SCOLARITÉ
Amphithéâtre Marcel Simon
Cafet SAVITÉ - CROUS Rennes Bretagne
- 04 ICOR - Institut de génétique et développement de Rennes
- 05 IPSET - Institut de recherche en santé, environnement et santé
BRM - Unité compétence et réseaux gis contrastés
ISCR - Institut des Sciences Chimiques de Rennes
- 06 IPSET
BioSt HOP2 - Biologie, santé, innovation technologique
CIC Rennes - Centre d'investigation clinique de Rennes
NutriCas - Nutrition, Métabolisme et Cancer
Anatomie
- 07 IML - Institut médico légal
Anatomie
- 08 BioSt - Biologie, santé, innovation technologique
- 10 Equipe chantier Bouygues Bâtiment Grand Ouest (BBOGO)
- 13 ENSEIGNEMENT - TRAVAUX PRATIQUES
- 13b Associations étudiantes
- 14 BU VILLEJEAN SANTÉ
- 14b Salles de cours modulaires
- 15 COORNOLOGIE
Equipe de recherche COCS, ISCR
- 15b LTSI - Laboratoire du traitement du signal et de l'image
- 16 GYMNASE - COSEC VILLEJEAN
SOLAPS - Service inter universitaire des activités physiques et sportives
- Salles temporaires d'enseignement (K5 à K70)
Associations étudiantes

SITE EN CHANTIER

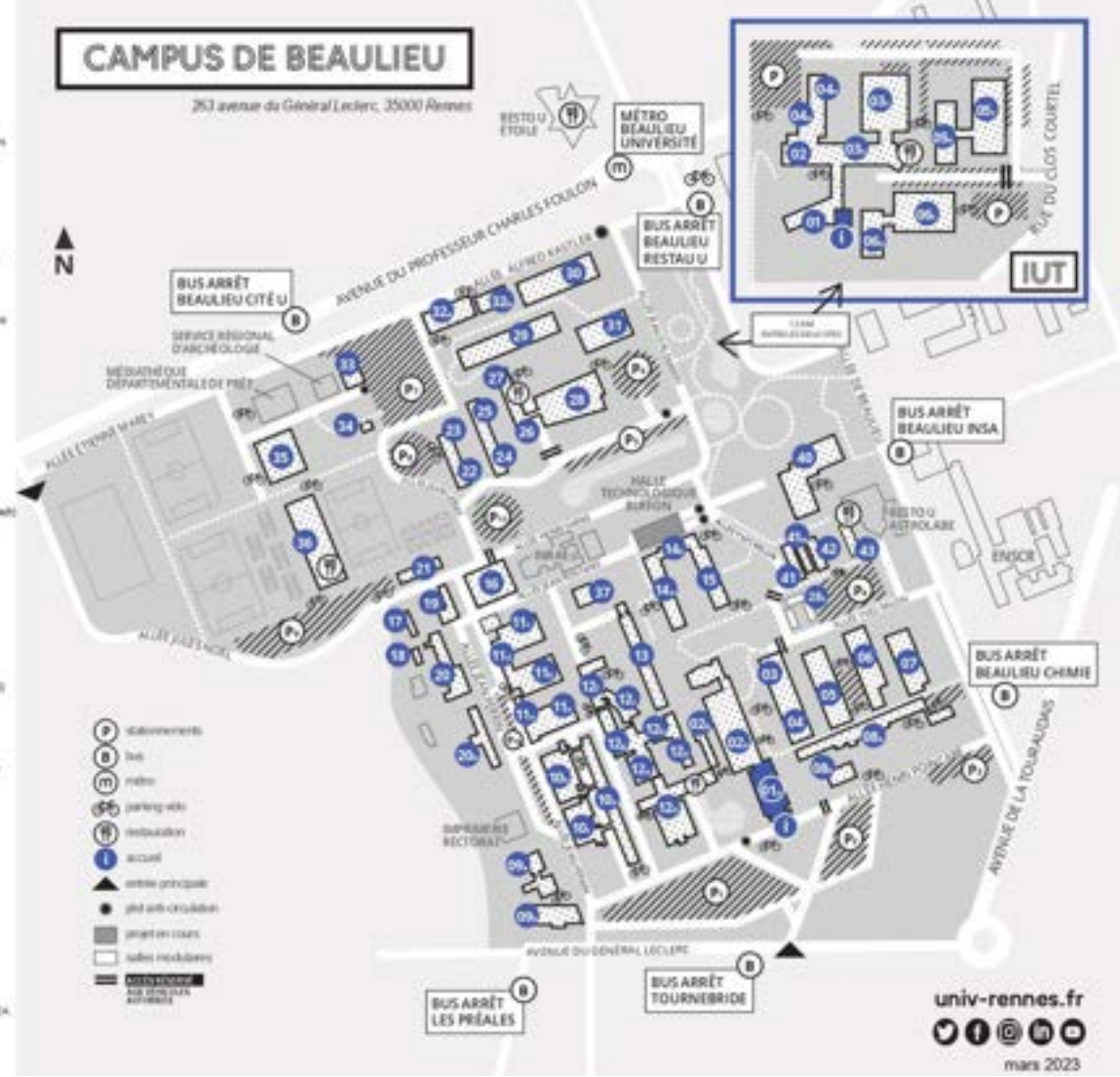
Le campus santé est en travaux depuis 2021. Les localisations sont données à titre indicatif et sont susceptibles d'être modifiées.



- 01 ACCUEIL
Présidence, Secrétariat général, DAI - Direction des affaires juridiques et institutionnelles
- 02 Amphithéâtre A, B, C, D, E
Salle Antares, Hall des sciences
- 03 TP informatique
- 04 TP physique
Collection et musée de zoologie
- 05 TP physique électronique
Collection et musée de géologie
- 06 TP physique
TP chimie
- 07 SIT Carrières sociales, SIT GEA
Salles d'examens, SAUT, DE
- 08 Bibliothèque Paul Le Bohec
Salle Conseil
- 09 Pôle Projets et réseaux, Salle formation Info, Salle d'orientation, Espace d'activités
- 10 IRM - Pôle numérique
Services BioInfo, Santé, SPCA
Rennes - Centre d'algorithmie, SOE (orientation insertion et entrepreneuriat)
- 11 ISCR - Institut des sciences
Cliniques de Rennes, organisations sportives
- 12 Amphithéâtre Grandjean
Pôle informatique
- 13 IP - Institut de physique de Rennes,
IFR SPN
- 14 CIMPO - Centre régional de
recherche pharmaceutique (CROUS)
- 15 ESI - Institut d'Électronique et
des Technologies de l'Informatique,
Info-technologie
- 16 Annuaire RISA, Info
- 17 RISA, Info (journaliste)
Amphithéâtre G (Info)
- 18 ISIC - IFR Informatique et
électronique, amphithéâtre P
ISU - Chaire de systèmes
d'information
- 19 IFR IVE, ICOR - Institut
français de développement de Rennes
- 20 OSUR (COBO) Géosciences/Rennes
Géosciences/Rennes, OSUR
Pôle océanique
- 21 Local cuisine - café
- 22 DL - Direction de l'Évaluation et de la
Logistique
- 23 IPU - Pôle de étudiants,
SSE (salle des étudiants)
- 24 IFR Mathématiques, IFR - Laboratoire
d'Automatique et de Signal
- 25 IRMAD - Institut de recherche
mathématiques de Rennes
- 26 Archéologie
Agence digitale,
CROUS
- 27 Recherche biologie
environnement
- 28 ICLISA (langues vivantes)
- 29 Pôle pédagogique Rennes,
salles d'examens
- 30 Amphithéâtre F, G, H, L, K, W, X, Y, Z
Salle de cours modulaires
- 31 TP langage
- 32 TP physique
- 33 TP chimie
- 34 TP informatique, salles d'enseignement
- 35 IFR Philosophie
Amphithéâtre U
- 36 DL - Médecine d'urgence
- 37 Permanence santé et sport (SUMP)
- 38 SOLAPS - Centre de services
sportifs, salles de sports
- 39 Services linguistiques
- 40 B/Qualité, salles d'information Bio
service, TP informatique
- 41 IFR IVE, ICOR - Institut
français de développement de Rennes
- 42 Local des associations étudiantes

CAMPUS DE BEAULIEU

263 Avenue du Général Leclerc, 35000 Rennes



- IUT - INSTITUT UNIVERSITAIRE DE TECHNOLOGIE (CLOS COURTEL)**
3 rue de Clos Courtel, 35000 Rennes
- 01 ACCUEIL
Accueil administration/étudiants
 - 02 Amphithéâtre
 - 03 Service formation continue et alternance, OASM
Département génie civil
 - 04 Administration/étudiants
Département chimie
 - 05 Département GMP
 - 06 Département GSI
 - 07 Département de chimie organique, GEA
 - 08 Bibliothèque Paul Le Bohec
Salle Conseil

FACULTÉ DE DROIT ET DE SCIENCE POLITIQUE

8 rue Jean Macé, 35000 Rennes

- 01** ACCUEIL
Société et services administratifs
Amphithéâtre
Amphithéâtre 1 - 3 - 8
Amphithéâtre 4 - Pierre-Henri Tanguy
Amphithéâtre 5 - André Perceval
Laboratoire Avenir
IOE - Institut d'Océanographie et d'Europe
Institut Droit public
CDA - Centre de droit des affaires
Associations étudiantes
EPOSP - Institut du droit public et de la science politique
- 01** Amphithéâtre V8
Associations étudiantes
Café CROUS Rennes Bretagne

IGB-IAE RENNES

11 rue Jean Macé, 35000 Rennes

- 02** ACCUEIL
Société et services administratifs
Cafétéria
Amphithéâtre 1 - Claude Champaud
Amphithéâtre 2
CREM - Centre de recherche en économie et management
Centre franco-espagnol de management
Associations étudiantes

IPAG INSTITUT DE PRÉPARATION À L'ADMINISTRATION GÉNÉRALE

196 boulevard de la Duchesse Anne, 35700 Rennes

- 03** ACCUEIL
Société et services administratifs

Les salles de classes et de TP sont réparties dans les différents bâtiments.

FACULTÉ DES SCIENCES ÉCONOMIQUES

7 place Hoche, 35000 Rennes

- 01** ACCUEIL
Amphithéâtre Krier
Amphithéâtre 1 et 2
Sociétés et services administratifs
CREM - Centre de recherche en économie et management - UMR 6211
CREG - Centre d'études et de recherches sur les qualifications
Associations étudiantes
- 02** Amphithéâtre 3 - 4 - 5
Cafétéria
Associations étudiantes
- 03** BU CENTRE
Espace Langues
ESPACE JEAN RAUX
SORE - Service orientation insertion entrepreneuriale
- 04** Magasin - BU Centre
- 06** Espace administratif

CITÉ INTERNATIONALE PAUL RICOEUR

11 Bis Boulevard de la Liberté, 35000 Rennes

 DAMI - Direction des affaires et relations internationales
DAFFA - Direction des affaires financières et de la politique d'achat
CMI - Centre de mobilité internationale

Les salles de classes et de TP sont réparties dans les différents bâtiments.





©Frédéric Obé

ADMINISTRATIVE STEPS

STEP 1.1 REGISTRATION

EXCHANGE STUDENTS



1. Validate your application

Register on **Mobility Online** with the password and login you've received from the **international relations office of your department/faculty**

3. Welcome programme

Indicate to the **international relations office of your department/faculty** if you wish to benefit from **free French courses** (1 semester), and if you want to **get a buddy** at the university.

2. Accommodation

On **Mobility Online**, choose your type of accommodation in the hall of residence : **economic** or **comfort room**

4. International Relations Office

Finish your registration at the **international relations office of your department/faculty**. Administrative registration takes place at the **registrar's office**, where you can get your **student card** and **register in the courses** as part as your learning agreement.

STEP 1.2 REGISTRATION

FREE-MOVER STUDENT



1. Validate your application

Once you receive an acceptance e-mail, confirm your choice on the platform through which you applied (**Etudes en France, Candidature, Parcoursup, Applying**).

2. Accommodation

After confirming my application, I look for accommodation as soon as possible. It can be very complicated to find accommodation if you only look for it at the beginning of the academic year. More information on [CMI Rennes website](#).

3. Welcome buddy

If you wish to benefit from a personalised welcome via the buddy system, you should register on the [ESN Rennes website](#). Your buddy (sponsor) will accompany you throughout the year to help you with your administrative procedures and also to help you discover the city and French culture.

4. CVEC & Registration Office

Pay the CVEC (Student and Campus Life Contribution). It applies to French and foreign students enrolling for a degree programme, except **specific cases**. Finish your admission at the **registration office** (online payment is not available for international students who enroll for the 1st time). You will be asked to pay the **tuition fees**, then you will obtain your student card and finalise your **courses registration**.

STEP 2. HEALTHCARE

Health coverage

Check whether you need to register to the French health system (**Sécurité Sociale**), **depending on your situation**. If so, go to the **dedicated webpage of the CPAM (Caisse Primaire d'Assurance Maladie)** to register, with the requested supporting documents.




University health service

The university offers a health service dedicated to students: **the Service de Santé Etudiant (SSE)**. Consultations, health check-ups, psychologists, etc..

Campus Villejean : Ereve Building

Campus Beaulieu : Building 2

 +33 2 23 23 55 05

Complementary health service

The French social security does not reimburse all health expenses, to have a more complete coverage of your expenses in general (especially in case of emergency), **the university strongly recommends to students to subscribe to a complementary student health insurance.**

There are several ones in France dedicated to students, e.g: **MGEN, LMDE, SMERRA, SMENO...**

STEP 3.1 HOUSING



in their search for accommodation. All information can be found on their website via [Mobil'home](#).

With [Studapart](#), the University of Rennes provides students with an accommodation platform that centralises advertisements from private landlords, estate agencies and student residences around the campuses and in many towns.

Exchange students

On [Mobility online](#), you can choose between two types of student accommodations: an economic or comfort room. You can check the types of accommodation on [CROUS website](#).

Free-mover students

Individual students can apply for a room in a hall of residence (CROUS) on the dedicated website: trouverunlogement.lescrous.fr

The International Mobility Centre (CMI Rennes) can provide free support to international students

Financial help

Subject to means testing, any person residing in France can claim housing assistance, paid by the [CAF \(Caisse d'Allocations Familiales\)](#). Only international students (outside Europe) in possession of a VLS-TS (Visa Long séjour valant Titre de séjour) are eligible.

More information on the website: service-public.fr

STEP 3.2

HOUSING



Useful information: student housing

On the [messervicesetudiant](#) website, you can find all the services available regarding student housing: application for a room in a CROUS residence, information on housing benefits, classified ads, etc.

Finding a guarantor

A guarantor is a person who undertakes to pay your rent if you can no longer afford to do so. In France, French or foreign people who want to rent a flat are almost always asked for a guarantor. The **VISALE** rental deposit allows people under 30 who do not have a guarantor in France or in Europe to provide an equivalent guarantee for the landlord.

Studapart can also act as your guarantor for the duration of your rental. To be eligible, all you need to do is submit your identity card and proof of admission to the university on the platform.

STEP 4. OPENING A BANK ACCOUNT



If you stay longer than 3 months in France, it is much more convenient to have a French bank account, even if you already own a bank account in your country. All students, whatever their nationality, have the right to open a bank account in France. Opening a french bank account allows you to:

- **Make bank transfers** to pay your rent, your registration fees, your mobile phone, etc.
- **Benefit from the CAF and the CPAM**, which will not be able to transfer money on a foreign bank account.
- **Subscribe to a housing insurance and a liability insurance** if you do not have one (compulsory in order to finalize enrolment in a French university).

[More information](#)

USEFUL INFOS

FOR NON-EU STUDENTS

Useful infos

There are **different types of student/researcher visas** (long stay visa = more than 3 months):

VLS-TS:

Visa Long Séjour valant titre de séjour (long stay visa)

VLS-T:

Visa Long Séjour temporaire (temporary long term visa)

Research-talent passport:

long-stay visa

If you live **in one of the countries subject to the «Études en France» procedure** and you need a visa to come study in France, you must first apply to enrol in a higher education institution through the platform **«Études en France»**.




Important

You must validate your visa within the 3 months after your arrival in France (you can check **here** whether you need a visa prior to coming to France). Validation can be done online.

Informations and contact in Rennes to validate your visa:

**Centre de Mobilité
Internationale
(CMI Rennes)**

 +33 2 22 51 44 20

**CENTRE DE
MOBILITÉ
INTERNATIONALE DE
RENNES**



©Frédéric Obé

STUDENT LIFE

WELCOME EVENTS



International student day

Thursday 7 September - 1pm - 6.30pm

On **Thursday 7 September**, the CMI and the University of Rennes are hosting an open day for international students: join us at the **Cité Internationale Paul Ricoeur** for a snack and a presentation of the University of Rennes and its services. On the programme for the day: information points and welcome packs for newcomers, entertainment, gifts, guided tours of the historic centre of Rennes, information stands run by CMI partners, presentation and booking of the CMI's 2023/2024 cultural diary to visit Brittany and take advantage of the cultural wealth of the city of Rennes at very low prices!

[Learn more on CMI website](#)



WELCOME EVENTS



Festival Univ R

Thursday 21 September - 4pm - 12am

To welcome you, the university invites you to its back-to-school festival. [See you on Thursday 21 September, Beaulieu campus, from 4pm to midnight.](#)

University life services, student associations and the university's partners are preparing a festive and convivial event to welcome you back and get the year off to a good start.

A host of events, concerts, an open-air cinema and food-trucks await you at this back-to-school festival. The event is free and open to all Rennes students.

[Discover the programme](#)

WELCOME EVENTS



Waiting for the festival...

Information forums will be held on campus in the first half of September:

- **Campus santé – Tuesday 5 September**, from 11:30 AM to 2:30 PM – Hall des amphis
- **Campus Beaulieu – Thursday 7 September**, from 11:30 AM to 2:30 PM – Hall des assos and Place de l'Astrolabe
- **Campus Centre – Tuesday 12 September**, from 11:30 AM to 2:30 PM – Cloître Faculté des sciences économiques

On this occasion, you can take advantage of the BU bibliodon, a geocaching walk offered by the Siuaps and collect your welcome pack.

Stands will be set up to provide information about university life, student associations and the university's partners.

STUDENT SERVICES

Cafeterias

You can find university restaurants or cafeterias on each campus

Villejean campus

L'Erève restaurant, Cafèt Santé

Campus Centre

Cafèt Droit, Cafèt Le Fougère, Cafèt IGR

Campus Beaulieu

L'Astrolabe, l'Etoile, le Diapason

Opening hours and location on the CROUS map

Welcome buddies

Exchange students at University of Rennes can benefit from a buddy welcome service. The ESN (Erasmus Student Network) Rennes also proposes a **buddy system**, and organizes a lot of social events throughout the year



Sport

More than **80 sport activities** are available with the **SIUAPS**, (Service interuniversitaire des activités physiques et sportives).

As a student, you can apply to most activities for free.

Sport equipments

Sport associations

Student life office

Student information points

Student organisations

Assistance for students with disabilities

Assistance for student projects



©Frédéric Obé

CULTURE

AT THE UNIVERSITY



Scientific collection

The university hosts a **rich cultural heritage**: zoological museum, botany, naturalized specimen of numerous species, scientific instruments (among which the french Minitel, the ancestor of the internet!) ancient books and manuscripts...

[More information on the cultural service website](#)

Diapason theater

Located on Beaulieu campus, and run by the Cultural center of the University, the Diapason is a theatre, hosting exhibitions, concerts, sport activities... As well as a cafeteria, a cinema-club, and various art activities and workshops (dance, music, drawing, photography...)

[Cultural programme](#)

[Cinema programme](#)

IN RENNES

Museums

[The Fine Arts Museum](#)

[Les Champs Libres](#)

[The FRAC Bretagne](#)
(contemporary
museum)

[The Museum of
Bretagne](#)

[La Criée](#)

[More information on
Office of tourism
website](#)

Libraries

[Bibliothèques Universitaires](#)
(the university libraries of
Université de Rennes 1)

[Les Champs Libres](#) (also a
cultural center and a museum)



Cinema and theatre

[L'Arvor](#) (cinéma)

[Le TNB](#) (cinéma et théâtre)

[Gaumont](#) (cinéma)

[La Paillette](#) (théâtre)

[Le Vieux St Etienne](#) (théâtre)

The two first ones are art cinemas, and offer reduced prices with the carte [Sortir](#)




©Destination Rennes



CONTACT

Direction des Affaires et des Relations Internationales
Cité Internationale Paul Ricoeur
1, place Paul Ricoeur

 +33 2 23 23 33 71
dari@listes.univ-rennes.fr
www.univ-rennes.fr/en

